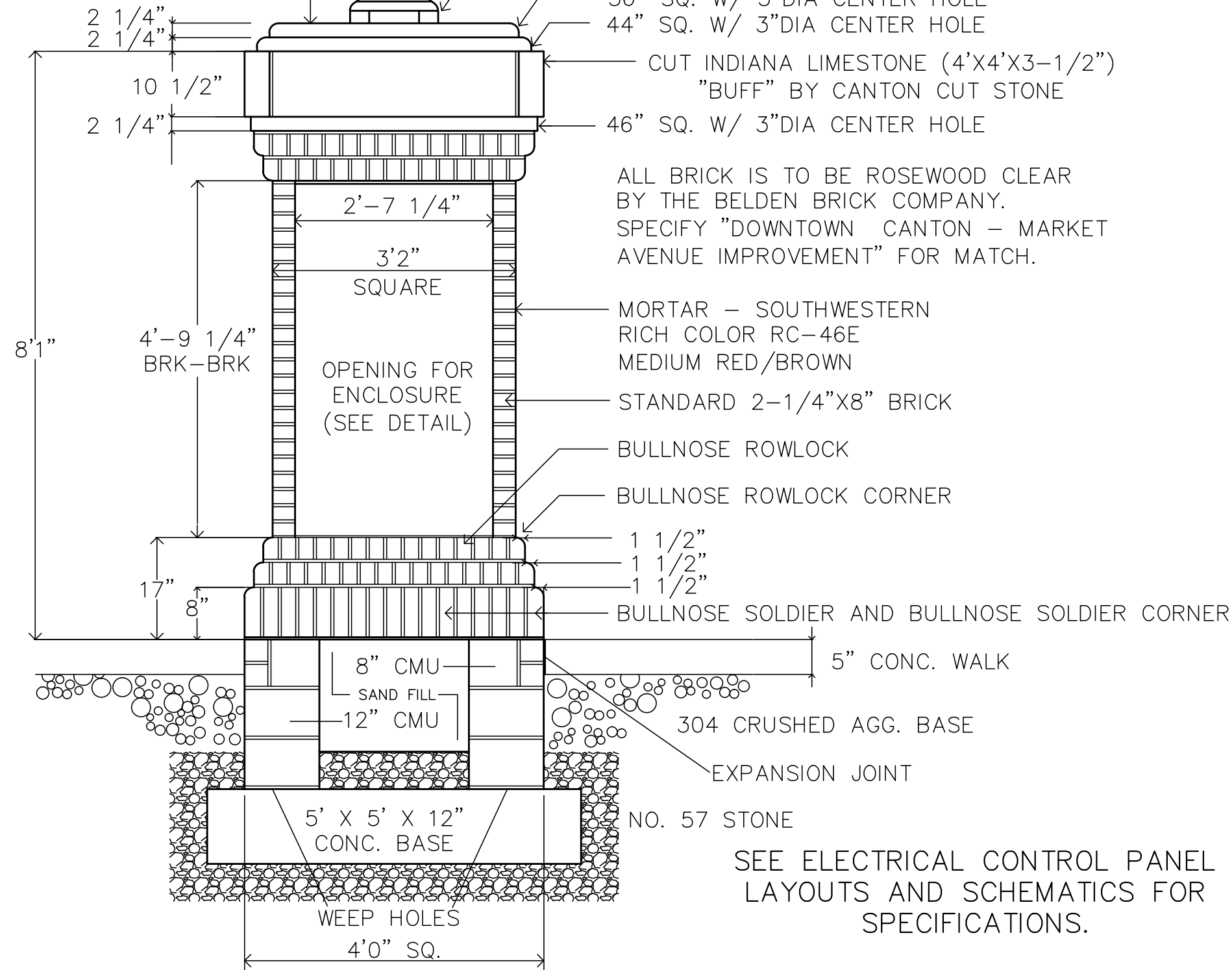


UNION METAL CORP. N1063-YF
NOSTALGIC GATEPOST LIGHT
ONE PIECE WHITE ACRYLIC /
16" DIA. GLOBE W/ 5" DIA.
CHROMED REFLECTOR

UNION METAL CORP. # 48
CAST ALUMINUM BASE W/
7-1/4" I.D. GLOBE HOLDER RING.
OCTAGONAL BASE W/ 14-1/8" FLATS
CANTON "CBD GREEN" COLOR

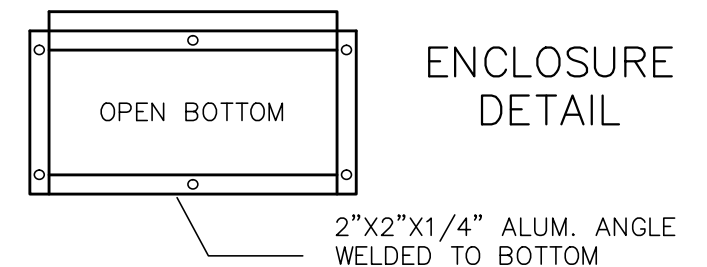
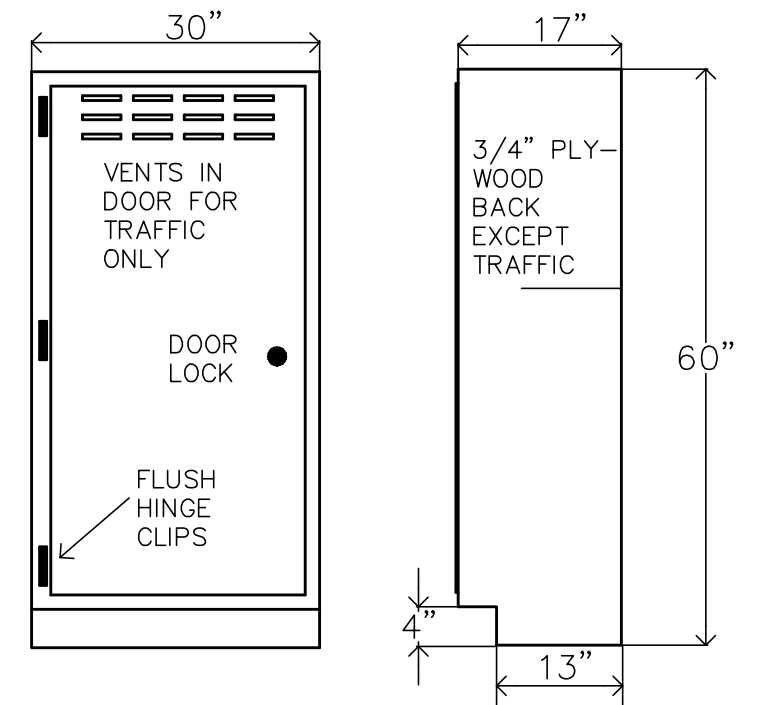
BRICK COLUMN FOR LIGHTING CONTROL
PANEL, TRAFFIC CONTROL PANEL & SPECIAL
EVENT PANEL ENCLOSURES.



0.125" 5052-H32
MARINE GRADE
ALUMINUM ENCLOSURE

NEMA 3R CONSTRUCTION

12"X6"X6" REMOTE POLICE
PANEL WITH LOCK TO BE
MOUNTED ON BRICK COL.
AS DIRECTED BY ENGINEER.



SEE ELECTRICAL CONTROL PANEL
LAYOUTS AND SCHEMATICS FOR
SPECIFICATIONS.



OFFICE OF THE CITY ENGINEER
CANTON, OHIO

DANIEL J. MOEGLIN, P.E., CITY ENGINEER
2436 30th St. NE 44705 330-489-3381 www.cantonohio.gov/engineering

APPROVED DATE: FEB. 2012

APPROVED BY: JTD

DRAWING FILE NAME:
ce_40-47_STREETSCAPE.dwg

REVISIONS

DESCRIPTION	DATE	BY

STANDARD DRAWING NO. 47

GATEWAY COLUMN
(4 FT x 4 FT) DETAILS

SHEET 1 OF 1